



HyperXpress[®] V4.2 Installation Instructions

This document will assist users in installing HyperXpress, including standalone, shared network and client/server configurations.

Installation

- Installation Overview
- Installing HyperXpress Standalone or Shared Network
- Installing HyperXpress Server & Client
- Installation Notes for AutoCAD 14, ArcView and ArcGIS

Copyright © 1991 - 2001 by Pinebush Technologies, Inc. All rights reserved. The information in this publication is subject to change without notice and should not be construed as a commitment from Pinebush Technologies, Inc. Pinebush Technologies, Inc. assumes no responsibility for any errors that may appear in this publication.

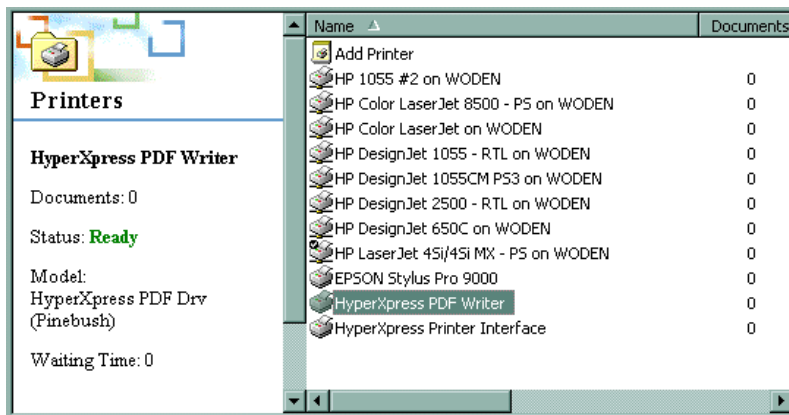
PostScript is a trademark of Adobe Systems Incorporated.
Windows is a trademark of Microsoft Corporation.

Installation Overview

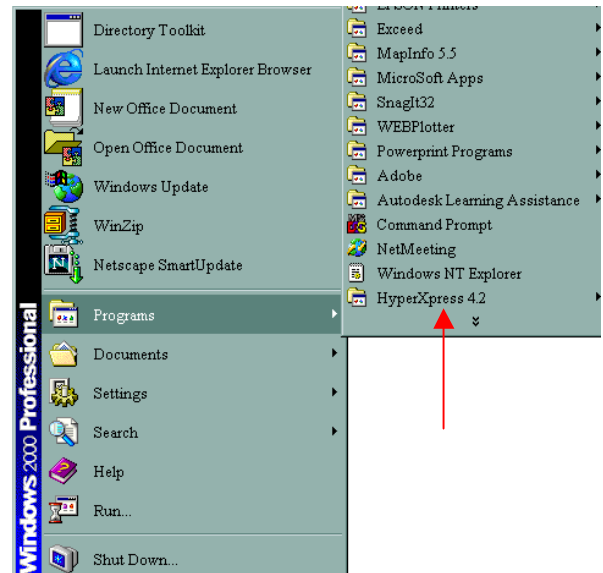
HyperXpress comes in two different versions: Standalone/Network and Server. Follow the steps on the next few pages to properly install the version of HyperXpress that you have.

When installation is complete, you should have a new HyperXpress folder in your computer's **Start** menu. You should also have two new printers listed in your computer's list of available printers. These printers will be called the **HyperXpress Printer 4.2** and the **HyperXpress PDF Writer**. See the following pages for more details on how to install and properly configure HyperXpress.

HyperXpress Printers in Windows Printers Folder



HyperXpress 4.2 Folder in Windows START Menu



Licensing Notice: When HyperXpress is first installed, it is setup with demo keys that will expire in 30 days. To obtain permanent keys, use the **Permanent Licenses Request Wizard** shortcut available in the **HyperXpress 4.2 Administrative Tools** folder.

Installing HyperXpress Standalone or Shared Network

If you downloaded HyperXpress from the Pinebush Technologies web site, use the Windows Explorer to browse to the file that was downloaded and double-click on this file to begin the installation.

1. The HyperXpress *Welcome* screen will appear. Select *Next*. Fill in the User & Company name, if you would like to change this information. Select *Next* to continue.
2. The *HyperXpress License Agreement* screen will appear. Please read the agreement and select *Yes* to continue.
3. The *Adobe License Agreement* screen will appear. Please read the agreement and select *Yes* to continue.
4. The *Setup Type* dialog will appear with Installation options. Choose an option and select *Next* to continue. The options are:
 - Standalone (Single-User) Installation – Installs on local machine for personal use
 - Shared Network Installation – Install to File Server for central access

Note that Shared Network Installation will require the purchase of Floating Keys after the initial demonstration period has expired.

5. The *Choose Destination Location* dialog will appear. Choose *Browse* to select an alternate location or select *Next* to accept the folder. You should choose a location that has at least 40mb of free disk space. If you are doing a Shared Network installation, the location you choose will require a sub-directory with write access by your users.
6. The *Select Program Folder* dialog will appear. Choose a folder for the HyperXpress shortcuts or select *Next* to accept the default program folder.
7. The *Select Components* dialog will appear. Click on the check box to create a desktop shortcut. Select *Next*.
8. The *Choose Working Directory* dialog will appear. HyperXpress will store all temporary working files in this folder. It is strongly recommended that the Working Directory be on a local disk with at least 300mb of free space available. See the section on *Maximizing HyperXpress Performance* in the *Getting Started Guide* for additional guidance on choosing this location. It may be helpful to create a new directory where only HyperXpress data will be stored. Choose *Browse* to select an alternate folder or select *Next* to accept the default folder.
9. You are now asked to review your selections. Press *Back* to go back and change some selections or *Next* to begin copying files and performing setup. During setup,
 - A PostScript driver, used internally by HyperXpress, will be added to your system.
 - The **HyperXpress Printer 4.2** and **HyperXpress PDF Writer** will be added to your system. They can be used with any Windows application.
10. The Printer Model Wizard now starts. You should define Pinebush Printer Drivers for wide-format printers. Pinebush Printer Drivers are used as an alternative to the standard manufacturer-supplied (e.g. HP, Encad, etc) Windows Printer Driver. Pinebush drivers can frequently achieve better speed and quality than the standard vendor-supplied drivers. You may skip this step and add Pinebush drivers at a later point, if needed. For further assistance, see the section on *Adding a Pinebush Printer Driver* in the *Getting Started Guide*.

11. Installation will now be complete. The user manual will be available from the HyperXpress shortcuts on the Windows **Start** menu. See the section on *Application Specific Tips* in the *Getting Started Guide* for additional guidance on HyperXpress setup.

Note: HyperXpress is initially setup with demo keys that will expire in 30 days. To obtain permanent keys, use the **Permanent Licenses Request Wizard** shortcut available in the **HyperXpress 4.2 Administrative Tools** folder.

Installing HyperXpress Client (for Shared Network Installations)

Following a Shared Network installation, you can now set up clients on any machine on your network. On the client machine, browse to the directory where HyperXpress was installed. You will find a sub-directory called *ClientSetup*. Run the **Setup** application on every client.

1. The HyperXpress *Welcome* screen will appear. Select *Next*. Fill in the User & Company name, if you would like to change this information. Select *Next* to continue.
2. The *HyperXpress License Agreement* screen will appear. Please read the agreement and select *Yes* to continue.
3. The *Adobe License Agreement* screen will appear. Please read the agreement and select *Yes* to continue.
4. The *Choose Housekeeping Location* dialog will appear. Choose *Browse* to select an alternate location or select *Next* to accept the folder. This is where certain HyperXpress files will reside on the client machine.
5. The *Select Program Folder* dialog will appear. Choose a folder for the HyperXpress shortcuts or select *Next* to accept the default program folder.
6. The *Select Components* dialog will appear. Click on the check box to create a desktop shortcut. Select *Next*.
7. The *Choose Working Directory* dialog will appear. HyperXpress will store all temporary working files in this folder. It is strongly recommended that the Working Directory be on a local disk with at least 300mb of free space available. See the section on *Maximizing HyperXpress Performance* in the *Getting Started Guide* for additional guidance on choosing this location. It may be helpful to create a new directory where only HyperXpress data will be stored. Choose *Browse* to select an alternate folder or select *Next* to accept the default folder.
8. You are now asked to review your selections. Press *Back* to go back and change some selections or *Next* to begin copying files and performing setup. During setup, A PostScript driver, used internally by HyperXpress, will be added to your system. The **HyperXpress Printer 4.2** and **HyperXpress PDF Writer** will be added to your system. They can be used with any Windows application.
9. The Printer Model Wizard now starts. You should define Pinebush Printer Drivers for wide-format printers. Pinebush Printer Drivers are used as an alternative to the standard manufacturer-supplied (e.g. HP, Encad, etc) Windows Printer Driver. Pinebush drivers can frequently achieve better speed and quality than the standard vendor-supplied drivers. You may skip this step and add Pinebush drivers at a later point, if needed. For further assistance, see the section in the *Getting Started Guide* on *Adding a Pinebush Printer Driver*.
10. Installation will now be complete. The user manual will be available from the HyperXpress shortcuts on the Windows **Start** menu. See the section on *Applications Specific Tips* in the *Getting Started Guide* for additional guidance on HyperXpress setup. **Note:** HyperXpress is initially setup with demo keys that will expire in 30 days. To obtain permanent keys, use the **Permanent Licenses Request Wizard** shortcut available in the **HyperXpress 4.2 Administrative Tools** folder.

Before Installing HyperXpress Server

Selecting a machine to run HyperXpress Server

Rasterization is a CPU, memory and disk intensive process. For this reason it is important to carefully choose the machine that will run **HyperXpress Server**.

For example, on a Windows NT network, the Primary and Backup Domain Controllers would not be good candidates to run **HyperXpress Server**. Similarly, a machine acting as a print server might seem to be an obvious choice. However, if running **HyperXpress Server** would adversely affect other print operations, another machine should be chosen.

Performance

- Placing the **ServerHome** and temporary working directory on the local disk of the server machine will provide the best performance. If this is not possible, a shared resource can be used, but server operation will slow considerably. In addition, network performance may be negatively impacted.
- Network speed between the clients and server will impact how quickly the **HyperXpress Client** software will load. This will be most noticeable during initial program load.
- Disk fragmentation will negatively impact server performance. It will be vital to regularly defragment server drives.
- SCSI disk is best

Security Considerations

HyperXpress Server requires clients to have read/write access to a sizeable portion of local disk space on the server machine. For this reason, it may be advantageous to place the installation directory, **ServerHome** and temporary working directories on a separate drive or partition, or share.

Installing HyperXpress Server

1. The HyperXpress *Welcome* screen will appear. Select *Next*. Fill in the User & Company name, if you would like to change this information. Select *Next* to continue.
2. The *HyperXpress License Agreement* screen will appear. Please read the agreement and select *Yes* to continue.
3. The *Adobe License Agreement* screen will appear. Please read the agreement and select *Yes* to continue.
4. The *Choose Destination Location* dialog will appear. It is important to select a drive/directory that can be shared out to other machines (client machines will need to map the drive). Select *Next*.
5. The *Select Program Folder* dialog will appear. Choose a folder for the HyperXpress Server shortcuts. The default should be acceptable to most users. Select *Next*.
6. The *Select Components* dialog will appear. Click on the check box to create a desktop shortcut. Select *Next*.
7. The *Choose Working Directory* dialog will appear. HyperXpress will store all temporary working files in this folder. It is strongly recommended that the Working Directory be on a local disk with at least 300mb of free space available. See the section on *Maximizing HyperXpress Performance* in the *Getting Started Guide* for additional guidance on choosing this location. It may be helpful to create a new directory where only HyperXpress data will be stored. Choose *Browse* to select an alternate folder or select *Next* to accept the default folder.
8. A summary screen will be displayed. Select *Next* to start the file copy process.
9. The Printer Model Wizard now starts. You should define Pinebush Printer Drivers for wide-format printers. Pinebush Printer Drivers are used as an alternative to the standard manufacturer-supplied (e.g. HP, Encad, etc) Windows Printer Driver. Pinebush drivers can frequently achieve better speed and quality than the standard vendor-supplied drivers. You may skip this step and add Pinebush drivers at a later point, if needed. For further assistance, see the section in the *Getting Started Guide* on *Adding a Pinebush Printer Driver*.
10. Now the Server Configuration Editor will be displayed. It contains the following options:

General Tab

ServerHome: This directory is where files will be copied for processing. It is a temporary working directory, and can grow to a large size, depending on how many jobs are in the queue, and the size/complexity of the images to be printed. The default **ServerHome** is located within the HyperXpress Server tree. The default location is recommended and will be fine in most instances.

Queue Name: A single word name given to the HyperXpress Server rasterization queue. A server can service multiple queues.

Notes: A note that will be displayed to client machines when the “Check Queue” window is open. This might include information about the machine running the HyperXpress Server, the hours of availability, etc.

New View: A view is the UNC path from a HyperXpress client to the HyperXpress Server **ServerHome** directory. On the machine running HyperXpress Server, the default **ServerHome** is:

`\\hostname\sharename\Program Files\HyperXpress\ServerHome.`

Each client machine must be able to write to this location

Options Tab (for controlling the behavior of the HyperXpress Server)

Processing: Controls how often HyperXpress Server checks the **ServerHome** for incoming print jobs.

Policy: Controls whether the queue acts as a FIFO (First-In First-Out) or processes smaller jobs first.

Notification: Controls under what circumstances a job will be logged.

Cleanup: Controls whether or not, and how often, log file and completed jobs are deleted.

11. Select *OK* once the options are properly configured. Then, the Server Configuration Editor will close and the installation of HyperXpress Server will be complete. A folder will be placed on the desktop, and shortcuts will appear on the Start menu. It is necessary to manually start HyperXpress Server by selecting the **HyperXpress Server** desktop shortcut and clicking on *Start Server*. A running Server will not survive a machine reboot or user logging off. To automatically start HyperXpress Server upon a reboot, copy the *Start Server* shortcut to the C:\WINNT\Profiles\All Users\Start Menu\Programs\Startup folder. Proceed to the *Installing HyperXpress Client* instructions for setting up each machine that requires access to the HyperXpress Server.

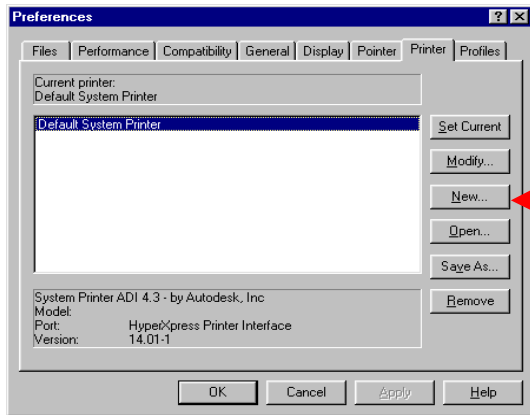
Note: HyperXpress Server is initially setup with demo keys that will expire in 30 days. To obtain permanent keys, use the **Permanent Licenses Request Wizard** shortcut available in the **HyperXpress Server 4.2 Administrative Tools** folder.

Installing HyperXpress Client (for Server Installations)

1. Browse to the HyperXpress Server installation. There will be a subdirectory located there named ClientSetup. Each client machine must run the **Setup** program.
(e.g. \\hostname\sharename\Program Files\HyperXpress\ClientSetup\setup.exe).
2. The setup program will install HyperXpress Client as a thin-client, meaning all program files will be run by accessing the necessary files on the Server machine. Some local drive space will be used for configuration data.
3. The Welcome screen will appear. Select *Next*.
4. Choose the location for the local configuration data. Select *Next*.
5. Choose the program folder for HyperXpress Client shortcuts. The default should be acceptable to most users. Select *Next*.
6. Select a temporary working directory. Select *Next*.
7. A summary screen will be displayed. Select *Next* to start the file copy process.
8. The *HyperXpress Printer 4.2* and *HyperXpress PDF Writer* printers and HyperXpress folder will be added to the client machine's Start Menu.
9. The installation will be complete. Once HyperXpress Server has been started, clients can submit jobs in a manner similar to submitting jobs using the stand-alone version of HyperXpress. Once the main GUI is displayed, users should select *Remote Server Queue* from the Job Processing panel on the GUI (on the *Advanced* Tab in the **File Submit GUI**). This will bring up a list of available server queues.

Installation Note for AutoCAD 14 Products

To use HyperXpress with AutoDesk R14 products, you must establish a printer definition for it. Follow these steps for a first-time setup.



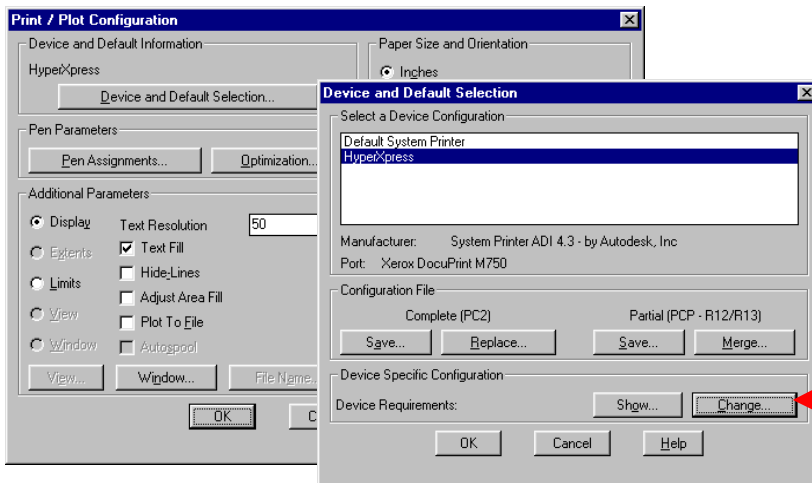
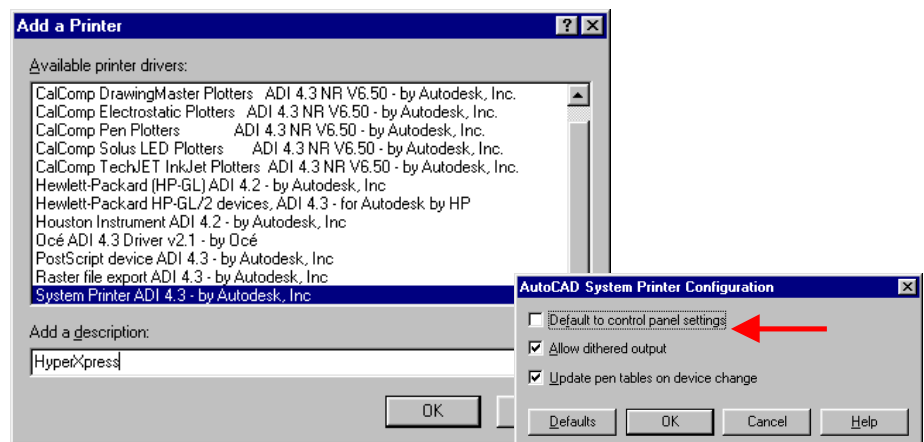
Step 1

Go to the Printer setup dialog in AutoCAD. This is typically located on the *Tools* menu under the *Preferences* selection. To setup a new printer definition, press the New button.

Step 2

Select the *System Printer ADI* option from the list of Available printer drivers. Give it a meaningful name, such as HyperXpress (as shown in this example).

When you press OK, make sure you uncheck the checkbox for *Default to control panel settings*.



Step 3

The first time that you print using HyperXpress, you'll need to make sure that the new HyperXpress printer you just defined is associated with the **HyperXpress Printer 4.2** printer.

To make this association, press the *Change* button and select the **HyperXpress Printer 4.2**.

Installing the ArcView GIS Extension

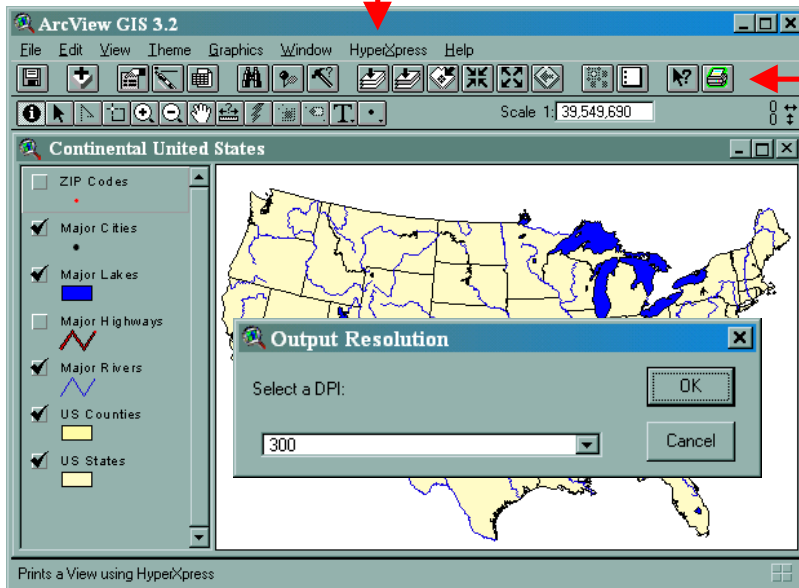
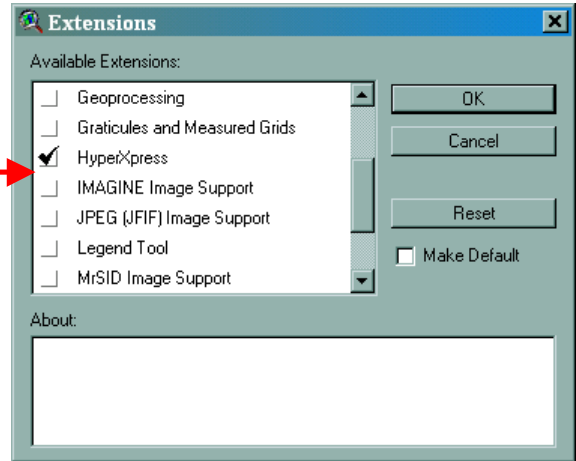
HyperXpress contains an extension that works with ArcView v3.1 or later. It was developed to resolve printing problems when using large Mr. SID or ERMapper compressed raster images. You can choose to use either the standard **HyperXpress Printer** or this extension. The extension is generally faster and easier to use and is optimized for use with problem data such as that containing large compressed raster images. You will need to determine which method works best for your needs.

Installation of the extension

To install the ArcView GIS extension, select HyperXpress 4.2 ► Administrative Tools ► Install ESRI Extensions.

To activate the extension, click Extensions on the File menu. Then, click the checkbox next to HyperXpress. Click OK.

Once the HyperXpress extension is installed and enabled, a new printer icon will appear in the toolbar and a new HyperXpress menu entry will be available, as shown in the example, below. Either can be used.



HyperXpress Menu

HyperXpress will print the current view. You are asked to specify the dpi of a data file that will be created for HyperXpress.

After completion of the data file, the HyperXpress GUI will start and you will have access to the full set of HyperXpress features.

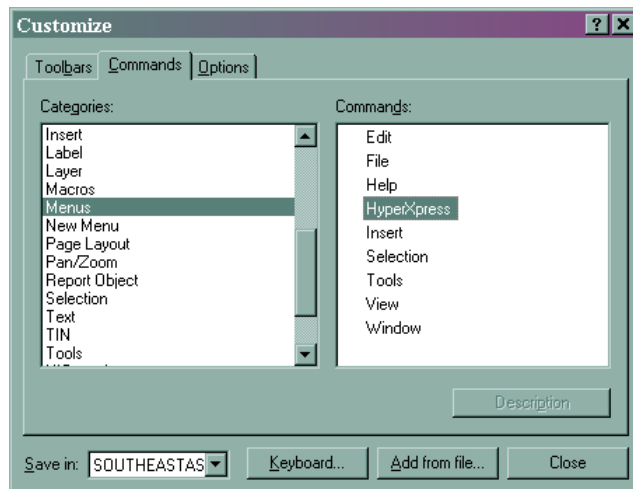
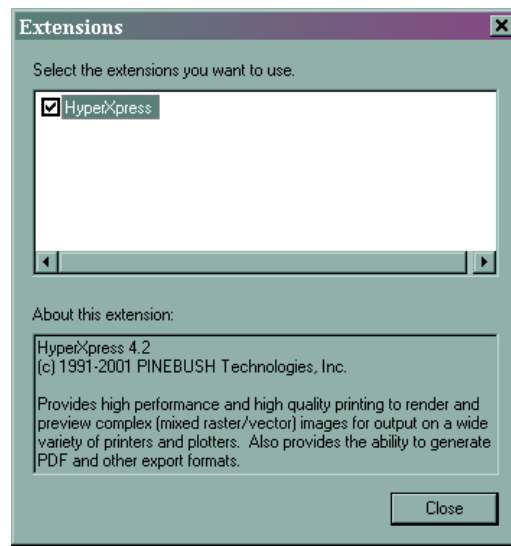
Installing the ArcGIS 8.1 ArcMap Extension

HyperXpress contains an extension for ArcGIS 8.1 ArcMap. It was developed to resolve printing problems when using large Mr. SID or ERMapper compressed raster images. You can choose to use either the standard **HyperXpress Printer** or this extension. The extension is generally faster and easier to use and is optimized for use with problem data such as that containing large compressed raster images. You will need to determine which method works best for your needs.

Installation of the extension

First, select HyperXpress 4.2 ► Administrative Tools ► Install ESRI Extensions. Make sure ArcGIS 8.1 is selected. Click Next. This installs the extension into your ArcGIS release.

Next, in ArcGIS ArcMap, on the Tools menu, click Extensions... Select the checkbox for HyperXpress. Click Close.



Last, to add HyperXpress to a toolbar, on the Tools menu, click Customize... Click the Commands tab. Now, select the Menus category on the left, and HyperXpress on the right. Drag the HyperXpress command to wherever you want: on a menu, on a current toolbar or create a new toolbar for it.

When you click the HyperXpress command, there are two choices, Print and Create PDF. Print will create a data file from the current view and then call the HyperXpress GUI. Create PDF will bring up a Save As dialog to select the PDF file name and location.

Please note that the ArcGIS 8.1 ArcMap extension is only available for Windows NT and 2000.